



Basic Plant Pathology Knowledge Check **KEY**

In the GBL Learning Library - Core Preparation Sessions
this is Section 1.4 in Module 1: The Fundamentals

1. Name 5 living causal agents of disease and give examples of each. (From Basic Plant Pathology presentation)

Fungi - Many examples including apple scab

Bacteria - Many examples including fire blight

Viruses - Many examples including tobacco mosaic virus

Nematodes - Many examples including Golden Nematode

Phytoplasmas - Many examples including Ash Yellows

2. What are some examples of abiotic damage? (From Basic Plant Pathology presentation)

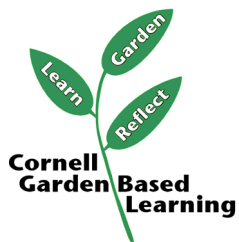
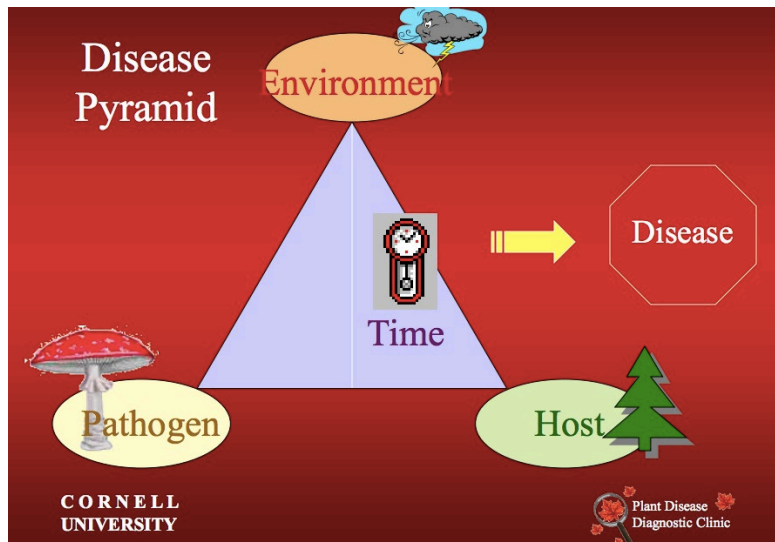
Many possible answers including herbicide injury, chemical spill, air pollution, freeze injury, nutrient deficiency, soil compaction, snow or salt damage.

3. How do plant parasites differ from plant saprophytes? (From Basic Plant Pathology presentation)

A parasite is an organism that derives nourishment from another living organism.

A saprophyte derives nourishment from dead or decaying organic matter such as fungi (mushroom).

4. Sketch and label the disease pyramid/triangle. (From Basic Plant Pathology presentation)



References: <http://plantclinic.cornell.edu/mastergardner.html>

Date Published/Updated: April 2019

Contributor(s): Fiona Doherty, Lori Brewer

Reviewer(s): Michelle Podolec, Donna Alese Cooke