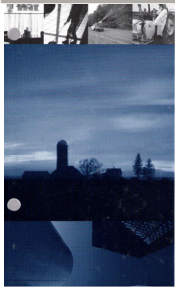


Pesticide Management Education Program

Protecting the People and Environment of New York

CALS Surge Facility
525 Tower Road
Ithaca, NY 14853-7401
607.255.1866
PMEP_Webmaster@cornell.edu



Pesticide
Safety
Education

Category
Industrial, Institutional,
Structural and Health
Subcategory
Food Processing



2019
Cornell Integrated Crop and
Pest Management Guidelines for
Commercial Vegetable Production



PMEP, a Cornell Cooperative Extension (CCE) program, has been a nationally recognized leader in pesticide safety education for over 40 years. Whether enjoying New York-grown or processed food and beverages, dining out, benefitting from public health mosquito control programs and properly maintained right-of-ways, or hiring professionals to tackle pest problems from weeds to termites and bed bugs, virtually every New Yorker benefits from PMEP's efforts to train agricultural producers and commercial businesses in the proper use and handling of pesticides.

In fulfillment of the Federal Insecticide, Fungicide and Rodenticide Act (FIFRA), PMEP provides certification training to pesticide applicators. On the commercial side alone, this amounts to a jobs training program with an economic impact of more than \$30 million each year just with respect to the salaries attained by applicators for whom certification is a job requirement. Other economic benefits of PMEP's training efforts, such as agricultural producers making safe and effective pest management decisions and food processors protecting their products from contamination by insects and rodents, are invaluable even if difficult to quantify.

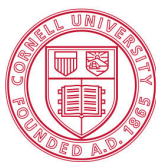
PMEP fulfills its mission by developing pesticide applicator certification training manuals, providing live and online applicator training, producing the Cornell Crop and Pest Management Guidelines series, and responding to public inquiries regarding pesticides and pest management. In doing so, PMEP is a leader in providing education in areas such as groundwater protection, integrated pest management, pollinator protection, and protecting people from pesticide exposure.

Cornell Entities for Which PMEP Provides Expertise and Outreach Support

- Researchers investigating the health and environmental effects of glyphosate (e.g., RoundUp)
- Pollinator Network @ Cornell
- New York State Integrated Pest Management Program (NYSIPM)
- Community IPM
- Northeast Regional Center for Excellence in Vector-Borne Diseases
- Institute for Food Safety
- CCE Master Gardener program
- Statewide, regional and county-based CCE staff
- Any others who come to us for assistance

PMEP protects New Yorkers and their environment from pesticide misuse by:

- Developing certification training manuals and exams (with the DEC) using a process that other states emulate.
- Responding to public inquiries, often talking people out of using pesticides in ways that could harm themselves or others.
- Verifying that CCE pesticide recommendations comply with label directions and NYS laws.
- Reaching out to NY's 25,000+ certified pesticide applicators in NYS via training events and the Internet.



Cornell University
College of Agriculture and Life Sciences

Cornell University provides equal program and employment opportunities.